



Home of the "Mustangs"

MAINE CONSOLIDATED SCHOOL #10

10 Spring Valley Road PO Box 50010 Parks, AZ 86018

Superintendent - Dr. Justin Roberson
(928) 635-2115 Fax (928) 635-5320

August 1st, 2025

Dear Mustang families:

In an effort to provide a safe and efficient student drop off and pick up procedure, we ask that you follow the traffic patterns included in this letter. Please help us to ensure safety for all of our students and staff each day. We are working hard to provide efficient traffic flow in our student pick-up area at dismissal time.

Students need to be dropped off in the morning at the **student loading zone gate** (see attached maps) and please **walk through the playground**. Pick up will also occur in the student loading zone (see attached map) starting at 3:30 p.m. Bus riders will load the bus and leave campus at 3:30 p.m. Parents will be able to use the marked loop to pick up their child, parents can also park in a designated spot, get out of their vehicle and meet their student at the pick-up area. If you are walking or have a student who walks, we need a note on file.

If you need to change your child's mode of transportation (pick-up, ride the bus, walking), please send a note to school with your child; if calling in with a change, please call no later than 1pm to give us the chance to relay the message.

Thank you for your cooperation in helping us to make our parent drop off and pick up run quickly, safely, and smoothly. I am sure you will agree that obeying the traffic and parking rules and laws will provide a safe environment for our students and staff. If you have any questions about our procedures, please contact me at (928) 635-2115.

Sincerely,

Dr. Justin Roberson

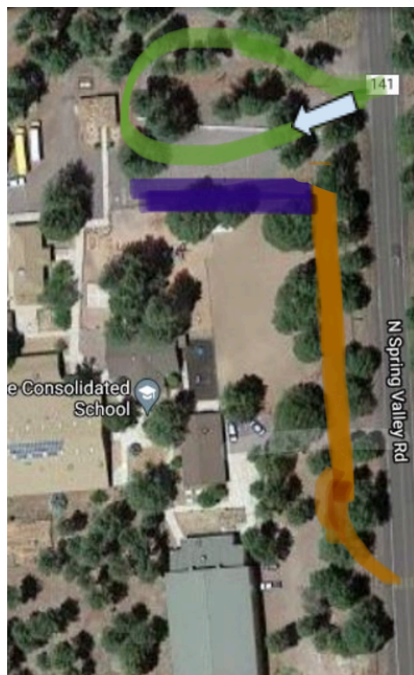
Maine Consolidated School District

jroberson@mcsd10.org

Morning Procedure* drop off will be in the north parking area.



Dismissal Procedure* Parent pick up is at 3:30; parents may also park in the purple area and students will walk over to their vehicle through the playground.



Legend:

Green loop area: entrance and exit into parking lot

Purple area: parent parking

Orange: bus lane

Blue arrow: directions to enter into parking lot, keep in mind this will be a one way road